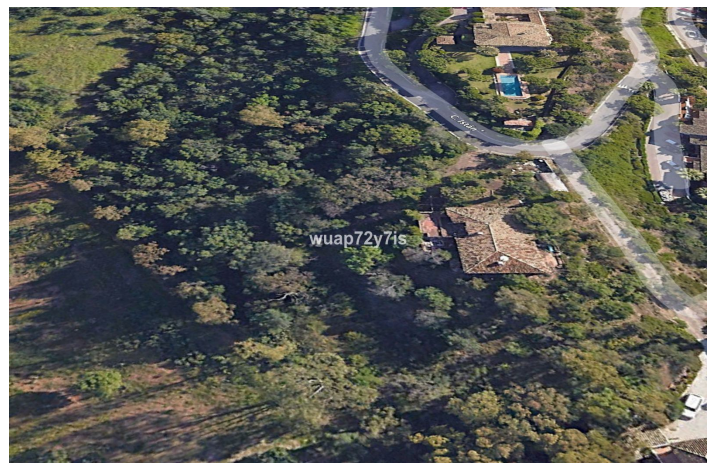
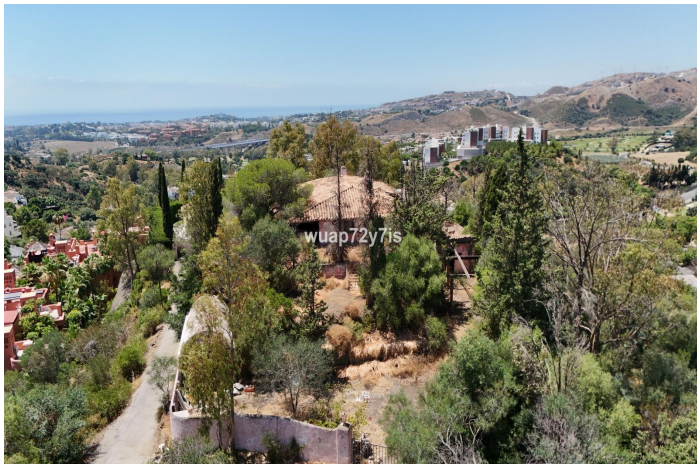




Residentiele Percelen te koop in Benahavís, Benahavís

4.800.000 €

Referentie: R5143183 Plotgrootte: 7.138m² Perceelgrootte: 3.000m²





Costa del Sol, Benahavís

Presenting a rare opportunity to acquire a truly exceptional plot in the prestigious gated community of Los Almendros, Benahavís. This impressive 7,000 m² plot sits at the highest point of the urbanisation, offering unmatched 180° panoramic views of the sea and Los Arqueros Golf Course. Enjoy total privacy, sunshine all day, and the potential to build: One grand villa of up to 3,000 m² built. Or two separate villas, each up to 1,500 m². Key Features: -Prime hilltop location with stunning views. -South-facing with all-day sun. -Full privacy in a secure and established community. -Infrastructure in place, ready to develop. -Close to Marbella, Puerto Banús, and the coast. -Whether you envision building a private estate or a high-end investment project, this plot offers limitless potential and true exclusivity. Los Almendros, Benahavís – Tranquil Living Close to Everything Los Almendros is a peaceful residential area located in the hills of Benahavís, just a short drive from Marbella, Puerto Banús, and the beaches of the Costa del Sol. Surrounded by lush greenery and panoramic sea and mountain views, it offers a perfect blend of tranquillity and convenience. Known for its exclusive villas and elegant developments, the area provides a secure and private setting while being only minutes away from golf courses, fine dining, international schools, and all amenities. An ideal choice for those seeking a serene lifestyle in a prestigious location, with quick access to the vibrant coast. Contact us today for more details or to arrange a viewing.



Kenmerken:

Zonorientatie

zuiden

South West Orientation

Uitzicht

Zeezicht

Mountain Bekeken

Weids

Golf Bekeken

Ligging

Dichtbij golfbaan

Urbanisatie

Dicht bij winkels

Dichtbij stad

Dichtbij scholen

Huidige Staat

Goede conditie

Voorzieningen

Elektriciteit

Gas